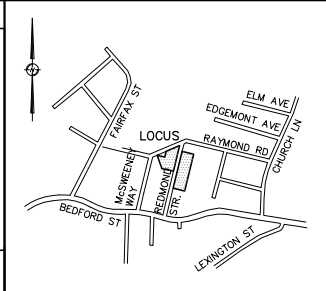


### LEGEND

□ CB	CATCH BASIN
◉ CDI	CEMENT LINED DUCTILE IRON
⊙ DMH	DRAIN MANHOLE
⊕ HYD	FIRE HYDRANT
⊙ LP	LIGHT POLE
○ PVC	POLYVINYLCHLORIDE
○ RCP	REINFORCED CONCRETE PIPE
⊙ SMH	SEWER MANHOLE
⊕ UP	UTILITY POLE
MWG	WATER GATE
⊕	INVERT
R=	RIM
AC.	ACRES
BW	BORDERING VEGETATED WETLANDS
CCB	CAPE COD BERM
EP	EDGE OF PAVEMENT
E.W.	EDGE OF WATER
I.R.	IRON ROD
MB	MAIL BOX
N/F	NOW OR FORMERLY
N.A.V.D. 88	NORTH AMERICAN VERTICAL DATUM 1988
RET.WALL	RETAINING WALL
□ S.B.D.H.	STONE BOUND DRILL HOLE
S.F.	SQUARE FEET
SGC	SLOPED GRANITE CURB
WF	WETLAND FLAG
BF	BASEMENT FLOOR
FF	FIRST FLOOR
GF	GARAGE FLOOR



**COMMONWEALTH ENGINEERING INC.**  
CIVIL ENGINEERS & LAND SURVEYORS  
27 CAMBRIDGE STREET  
SUITE 106  
BURLINGTON, MA 01803  
TEL (781) 229-0411  
FAX (781) 229-0520  
WWW.COMMONENG.COM

APPROVED BY THE BURLINGTON PLANNING BOARD

DATE: \_\_\_\_\_

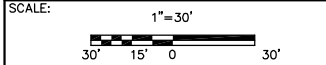


## DEFINITIVE SUBDIVISION #4 & #5 REDMOND STREET IN BURLINGTON MIDDLESEX COUNTY MASSACHUSETTS FEBRUARY 1, 2021

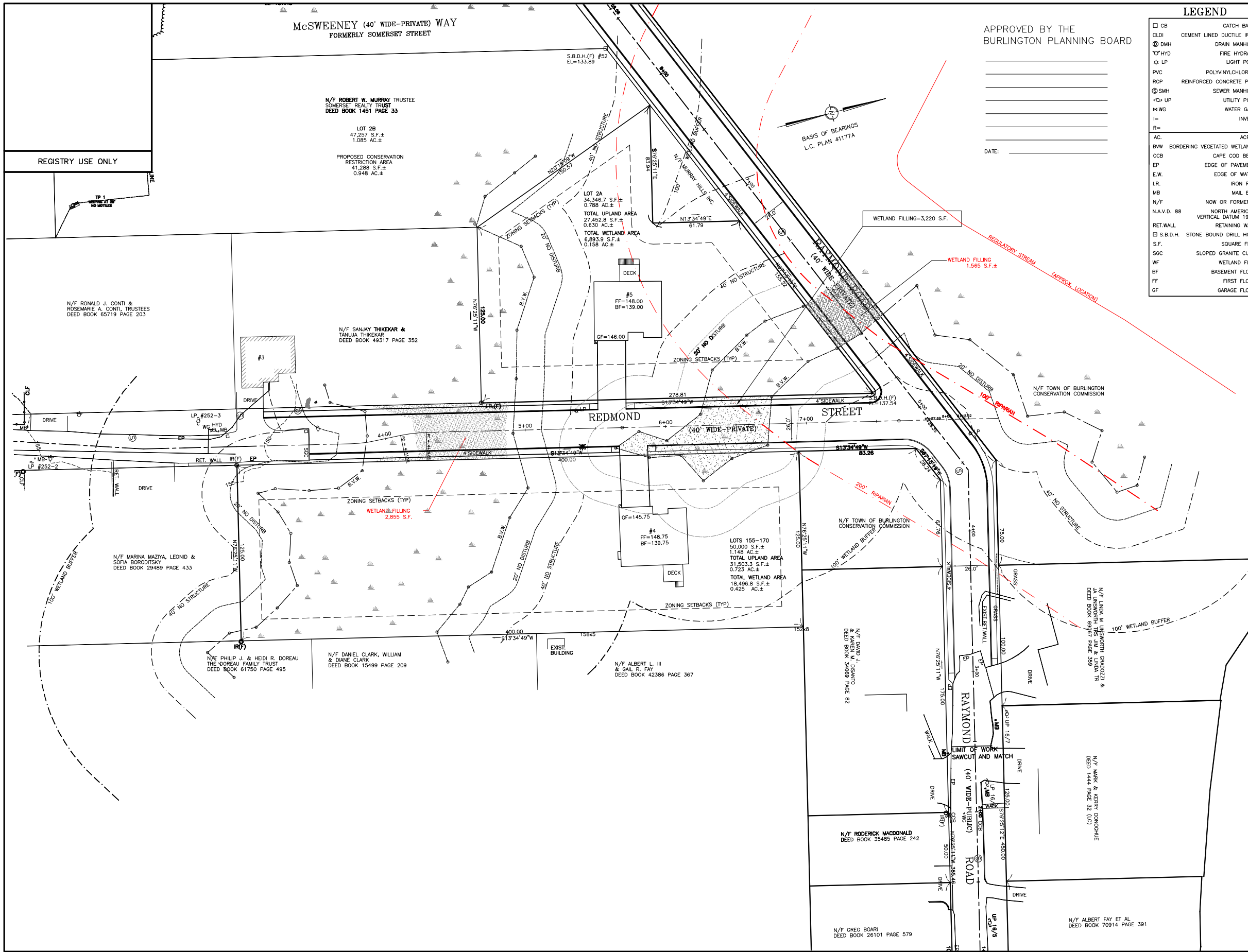
### PROOF

APPLICANT/OWNER  
**SOMERSET REALTY TRUST  
ROBERT W. MURRAY, TRUSTEE  
27 CAMBRIDGE STREET  
BURLINGTON, MASSACHUSETTS**

NO.	DATE	DESCRIPTION



FIELD: DDO/ERN	CALCULATED: DDO
DRAWN: ERN	CHECKED: DDO
FILE PATH (H:\PROJ\212033.00\DWG\REDMOND ST\PHASE 2-RAYMOND RD_CEI-DEFIN.DWG)	
TAB: PROOF	SHEET: PROOF
JOB NO.: 218001.00	



REGISTRY USE ONLY

N/F RONALD J. CONTI & ROSEMARIE A. CONTI, TRUSTEES  
DEED BOOK 65719 PAGE 203

N/F MARINA MAZIYA, LEONID & SOFIA BORODITSKY  
DEED BOOK 29489 PAGE 433

N/F PHILIP J. & HEIDI R. DOREAU  
THE DOREAU FAMILY TRUST  
DEED BOOK 61750 PAGE 495

McSWEENEY (40' WIDE-PRIVATE) WAY  
FORMERLY SOMERSET STREET

N/F ROBERT W. MURRAY TRUSTEE  
SOMERSET REALTY TRUST  
DEED BOOK 1451 PAGE 33

PROPOSED CONSERVATION RESTRICTION AREA  
41,288 S.F. ±  
0.948 AC. ±

N/F SANJAY THIKEKAR & TANUJA THIKEKAR  
DEED BOOK 49317 PAGE 352

LOT 2B  
47,257 S.F. ±  
1.085 AC. ±

LOT 2A  
34,346.7 S.F. ±  
0.785 AC. ±  
TOTAL UPLAND AREA  
27,452.8 S.F. ±  
0.630 AC. ±  
TOTAL WETLAND AREA  
6,893.9 S.F. ±  
0.158 AC. ±

#5  
FF=148.00  
BF=139.00  
GF=146.00

#4  
FF=148.75  
BF=139.75  
GF=145.75

LOTS 155-170  
50,000 S.F. ±  
1.148 AC. ±  
TOTAL UPLAND AREA  
31,503.3 S.F. ±  
0.723 AC. ±  
TOTAL WETLAND AREA  
18,496.8 S.F. ±  
0.425 AC. ±

N/F ALBERT L. III & GAIL R. FAY  
DEED BOOK 42386 PAGE 367

N/F RODERICK MACDONALD  
DEED BOOK 35485 PAGE 242

N/F GREG BOARI  
DEED BOOK 26101 PAGE 579

N/F MARK & KERRY DONOGHUE  
DEED 1444 PAGE 52 (LO)

N/F ALBERT FAY ET AL  
DEED BOOK 70914 PAGE 391